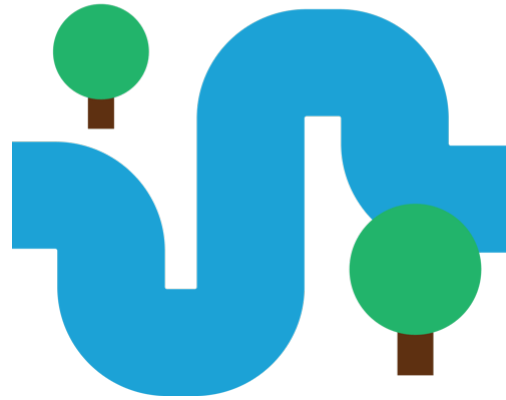


Rediscovering the River Colne



Hello friend,

What we have been up to?

River Colne Community Festival

On Sunday 10th September we celebrated our annual River Colne Community Festival. The sun was shining and lots of you turned up to learn more about your local river and to enjoy the activities we planned. Our Travelling Tales craft activity encouraged children to learn through stories about the importance of protecting the Colne. This activity was linked to our Tales of the River project which explores how the River Colne has shaped Watford's history.



Rediscovering the River Colne

We are transforming the River Colne and we need your help!

Have you got some spare time you would like to use to help the local environment?

Join Groundwork East and Watford Borough Council **6th December** to discuss events and campaigns that will benefit the River Colne.

To book your place, visit: <https://rb.gy/xgw9j>

To find out more about this opportunity please contact: emily.evans@groundwork.org.uk

Upcoming Events

Community Coffee Evening

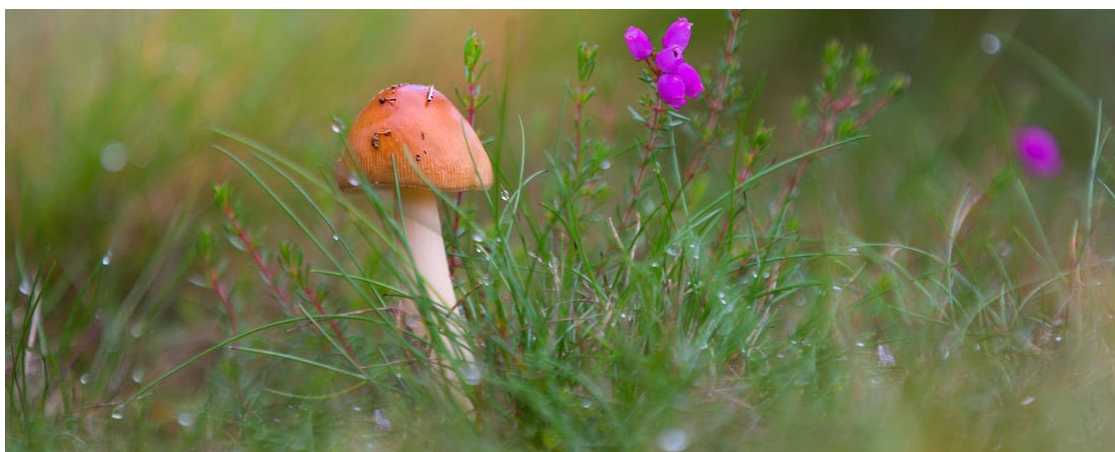
Join Groundwork East at Watford Rugby Club to discuss events and campaigns that will benefit the River Colne and celebrate it as an important asset to the town.

- 6th December 2023
- 6:30pm-8pm
- Watford Rugby Club, Radlett Road, Watford, WD24 4LL

[Sign Up Here](#)

Nature Spotting in Autumn

- **Funghi** - With more than 15,000 species in the UK, fungi make up an entire kingdom of their own. These curious beings are neither plant, nor animal, and their diversity is stupendous. Chicken of the woods and King Alfred's cakes, pink ballerinas and scarlet elf cups, blewits and boletes; some are delightfully named, some delicious, and others poisonous.
- **Autumn Woodlands** - Autumn is a time of hunting for conkers, kicking through great drifts of fallen leaves and roasting chestnuts. The woodlands are transforming; the once green leaves taking on fiery shades; bursts of red and purple berries and shiny brown acorns and nuts tempting thrushes and squirrels.



Take Part

Become a Walk Leader!

As part of our 'Tales of the River' project, funded by [National Lottery Heritage Fund](#) with thanks to National Lottery Players, we are looking for paid walk leaders to guide river adventures along the beautiful River Colne.

If you're ready to embark on a journey of discovery and share your love for Watford's hidden gems, we want to hear from you!

Rediscovering the River Colne
Tales of the River

Walk leaders!

Have a story to tell about Watford's natural, cultural or industrial heritage? Can you inspire others with your art, creativity or passion?

Groundwork and Watford Borough Council are looking for paid walk leaders to run river walks linked with the River Colne.

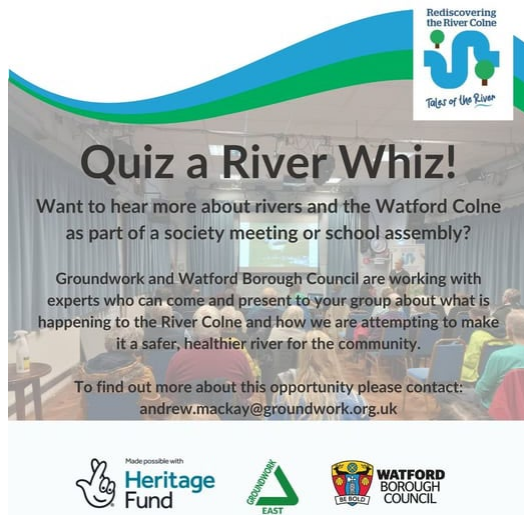
To find out more about this opportunity please contact:
andrew.mackay@groundwork.org.uk

Made possible with
Heritage Fund

GROUNDWORK
EAST

WATFORD
BOROUGH
COUNCIL

Become a Walk Leader



Quiz a River Whiz!

Want to hear more about rivers and the Watford Colne in an indoor setting as part of a meeting or assembly?

Groundwork are working with 'river whiz' experts who can come and present to your group about what is happening to the River Colne and how we are attempting to make it a safer, healthier river for the Watford Community.

Quiz a River Whiz

Travelling Tales

Travelling Tales is an interactive heritage tour of the River Colne, making a journey around the communities of Watford. Our aim is to engage the residents of Watford with the history of the river and emphasise the crucial role that the Colne has played in the development of the town. We are looking for adult groups to engage with this Autumn/Winter and school groups from Spring 2024.



[Sign Up Here](#)

We are always looking for volunteers to help us Rediscover the River Colne. If you are interested please contact emily.evans@groundwork.org.uk

To keep up to date with upcoming events and information check out our website <https://www.rivercolnewatford.co.uk/>

Many Thanks,

Emily Evans She/Her

Project Officer (Hertfordshire)

Groundwork East

Groundwork East, Mill Green, Hatfield, Hertfordshire, AL9 5PE, United Kingdom

[Unsubscribe](#) [Manage preferences](#)

